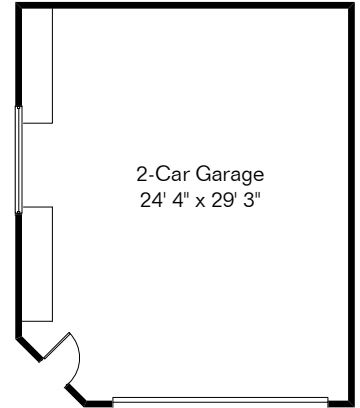


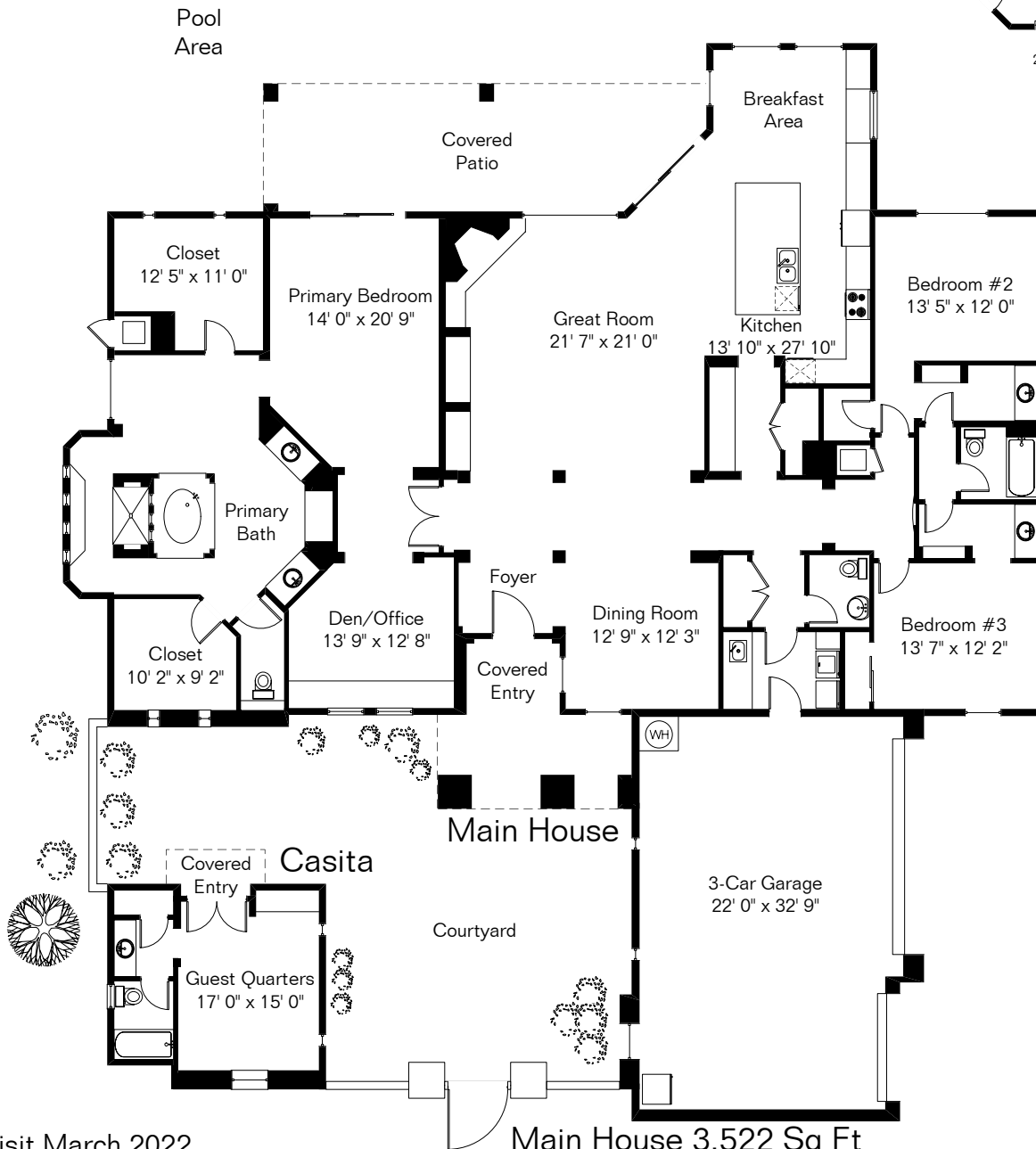
The square footages and room size information are deemed to be reliable but are not guaranteed and should be independently verified. This drawing is for marketing purposes only.

12593 N Vistoso View Place

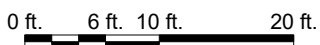
Presented by Pam Treece
 Long Realty Company
 (520) 275-2664



2-Car Garage is farther from Main House than shown



Site Visit March 2022



Copyright 2022 Floor Plans First! LLC
 All Rights Reserved.

Main House 3,522 Sq Ft
 Casita 297 Sq Ft

Total Living Area 3,819 Sq Ft
 3-Car Garage 809 Sq Ft
 2-Car Garage 749 Sq Ft

Floor Plans First!
 See the Floor Plan First™
 FloorPlansFirst.com™
 (520) 881-1500